

Trust

Alaska Mental Health
Trust Authority

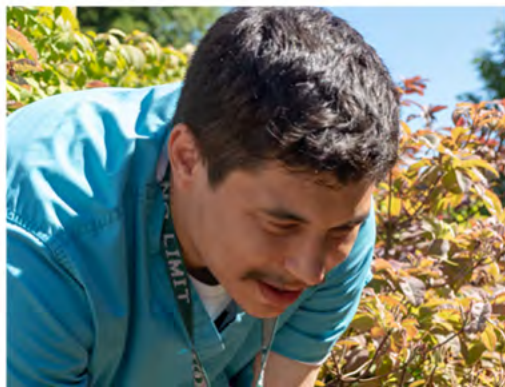
Peer Support Services Facility: Porcupine Building Project Update

January 3, 2019 - Program & Planning Committee

Katie Baldwin, Senior Program Officer
Jimael Johnson, Program Officer
Aaron O'Quinn, Program Related Investments Manager

Facilities Project Background

- ~2008
 - Assess and recognize benefits of beneficiary and organizational benefits to Peer Support Service co-location
- 2009-2018
 - Ongoing facility search for co-location of Anchorage-based Peer Support Service agencies (Alaska Mental Health Web and CHOICES Inc.)
 - November 2018: Trustees approve allocation of portion of Trust Budget Reserves for future Program Related Investment
- 2019
 - Program Related Investment opportunities identified



Beneficiary Projects Initiative (BPI) Background

- Beneficiary Projects Initiative (BPI) - 2008-present
 - Beneficiary run and directed programs with primary missions to serve Trust beneficiaries
- Peer Support Services
 - Peer Support and Social Inclusion is an evidence-based practice that facilitates recovery and reduces health care costs. Peers bring hope to people in recovery and promote a sense of belonging within the community.



Alaska Consumer Mental Health Web

Mission:

The Web provides peer-driven, peer support in a safe environment guided by unconditional positive regard using a recovery-based philosophy. We offer hope with no red tape and no strings attached.



FY19 Highlights

- 1979 Trust beneficiaries/members served
 - 391 new members
- Beneficiary outcomes:
 - 99% reported safe place to be during the day
 - 96% received basic needs supports
 - 72% helped with personal challenges such as mental illness
 - 81% increased access to housing
 - 71% increased access to paid employment
 - 88% helped with sobriety/SUD reduction

CHOICES Inc.

Mission:

To enable individuals to achieve behavioral health through personal choices and ownership.

FY17 Highlights (Intensive Case Management & Peer Bridger Programs)*

- 786 Trust beneficiaries served
- Beneficiary outcomes:
 - 99% report stable housing
 - 99% report clean and sober
 - 7% increase in family reunification
 - 25% employed in community
 - 8% volunteering in community
 - 95% decrease in acute care utilization



**FY18-19 data incomplete due to organizational disruption*

Historical Trust Investment

	Alaska Mental Health Consumer Web	CHOICES, Inc.
FY20	\$333,600	\$440,170
FY19	\$333,600	\$440,170
FY18	304,000	347,670
FY17	304,000	347,670
FY16	304,000	347,670
FY15	304,000	324,000
FY14	238,000	190,400
FY13	238,000	190,400
FY12	210,000	190,394
FY11	185,000	180,000
FY10	185,000	200,000
FY09	167,000	200,000
FY08	100,000	168,000
TOTAL	\$3,206,200	\$3,566,544

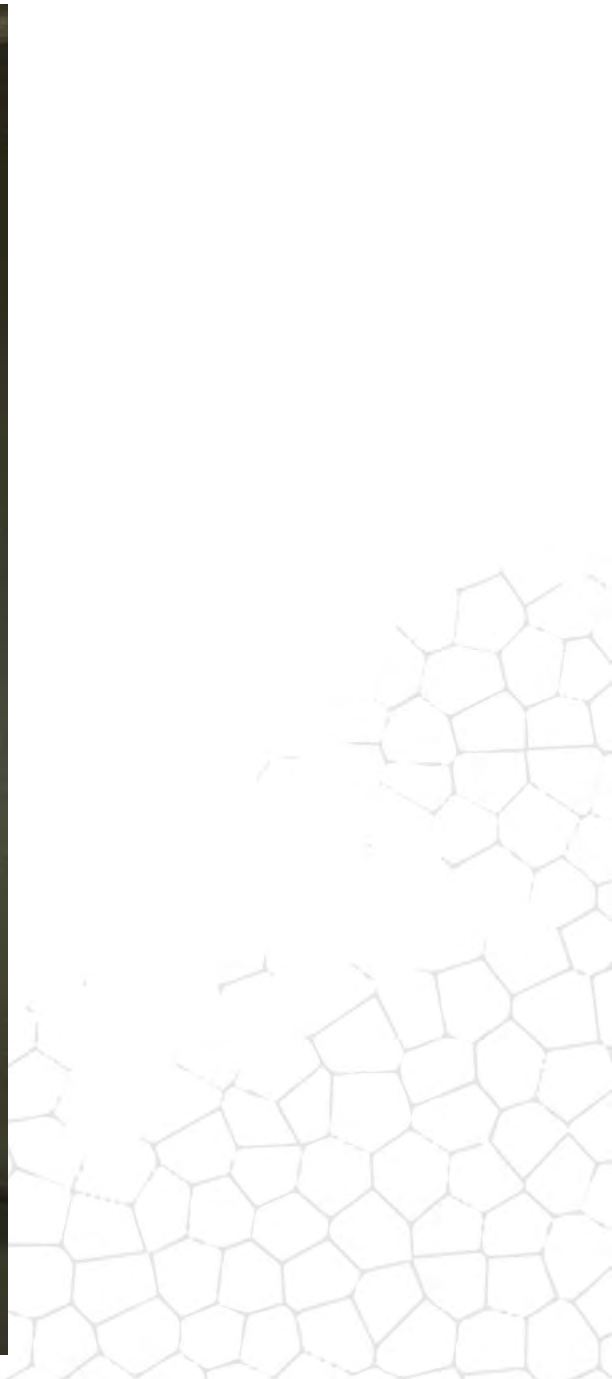


Why facility investment needed

- Physical plant at both programs is insufficient for needs
- Location challenges -safety, proximity to liquor store











E 13th Ave

CARRS

CARRS
QUALITY MEATS

OAKEN KEG

←

NO RIGHT TURN

Red traffic light

Green traffic light







ARCTICSPINE

1335

CARRS

FREE TEE SHOTS

PRI Program Overview

- Denardo - Fairbanks Sobering Center;
- Fahrenkamp - FCMHS;
- Assets Building;
- FNA Detox;
- ASD;
- VOA



3001 Porcupine Drive Property



Location



Property Boundaries





Project Costs

- Appraised Value: \$382,500
- Shell and Core Corrections: \$1,600,000 - \$1,900,000
- Tenant Improvements: \$600,000 - \$750,000
- Future Deferred Maintenance: \$200,000 - \$250,000

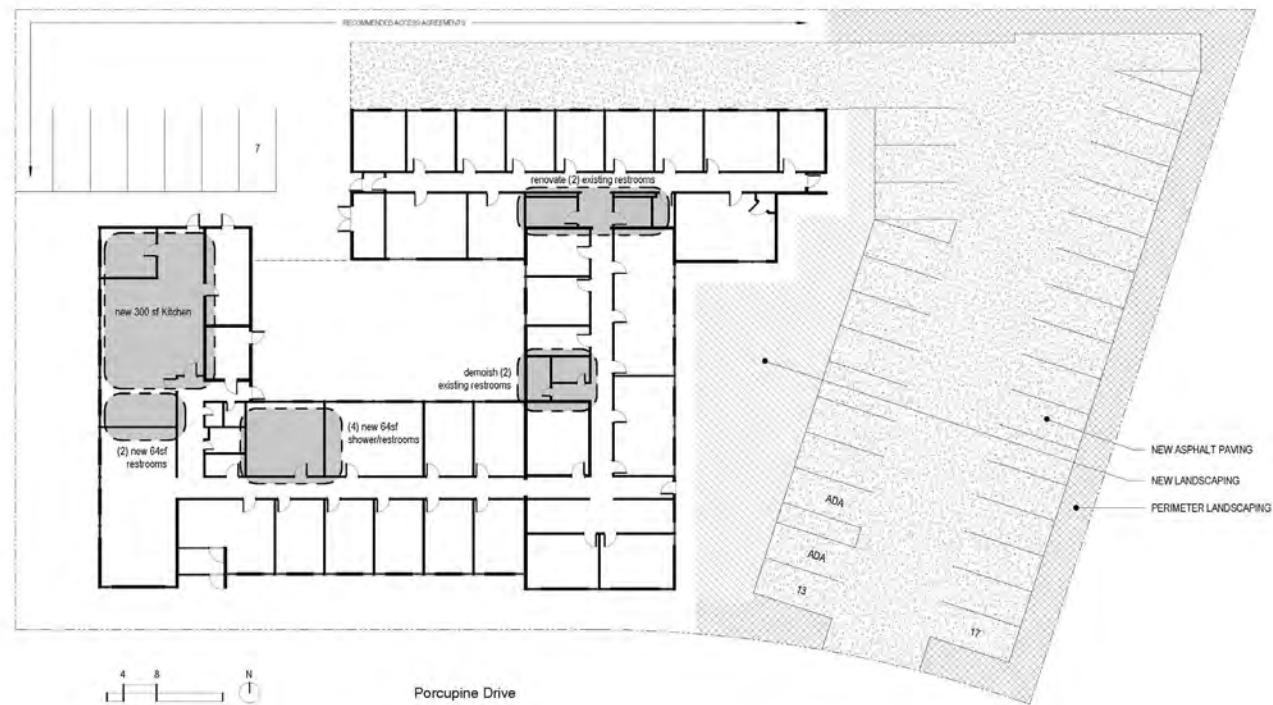
Total: \$2,800,000 - \$3,280,000

Major Cost Components

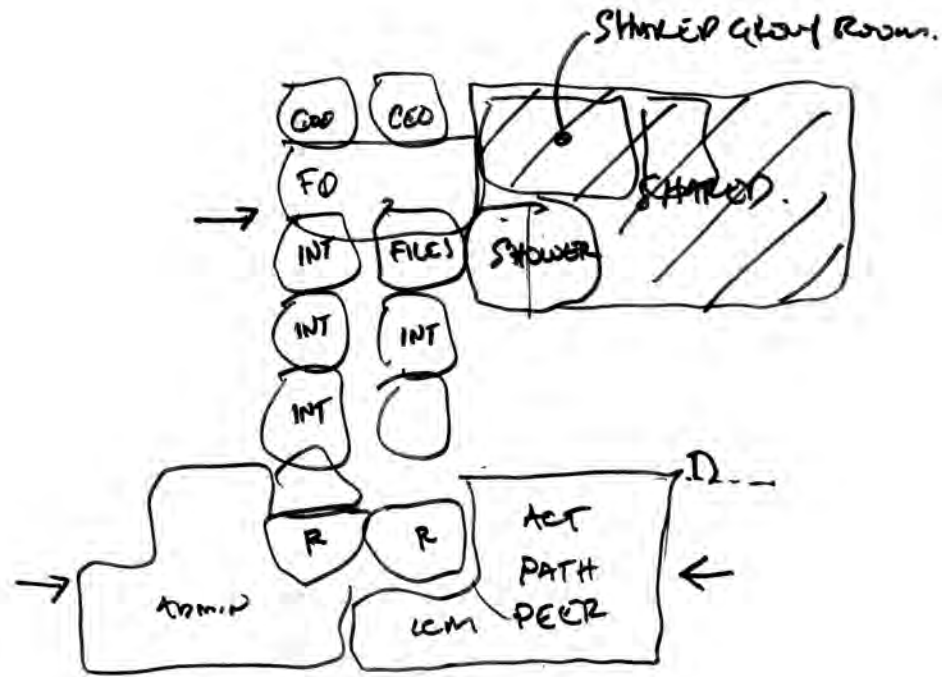
- Structural - \$295,000
- Roof - \$500,000
- Restrooms - \$170,000
- HVAC - \$75,000
- Storm Water - \$350,000



Existing Layout



CHOICES, Inc. Space Planning



12.17.19



Next Steps to Breaking Ground

- Complete space planning;
- Determination of operating expenses;
- Determine financial operating model;
- Concurrence from organizations' Boards;
- Approval of final budget and operating model by AMHTA BoT (incl. source of funds);
- Property acquisition;
- Procure construction/engineering contacts